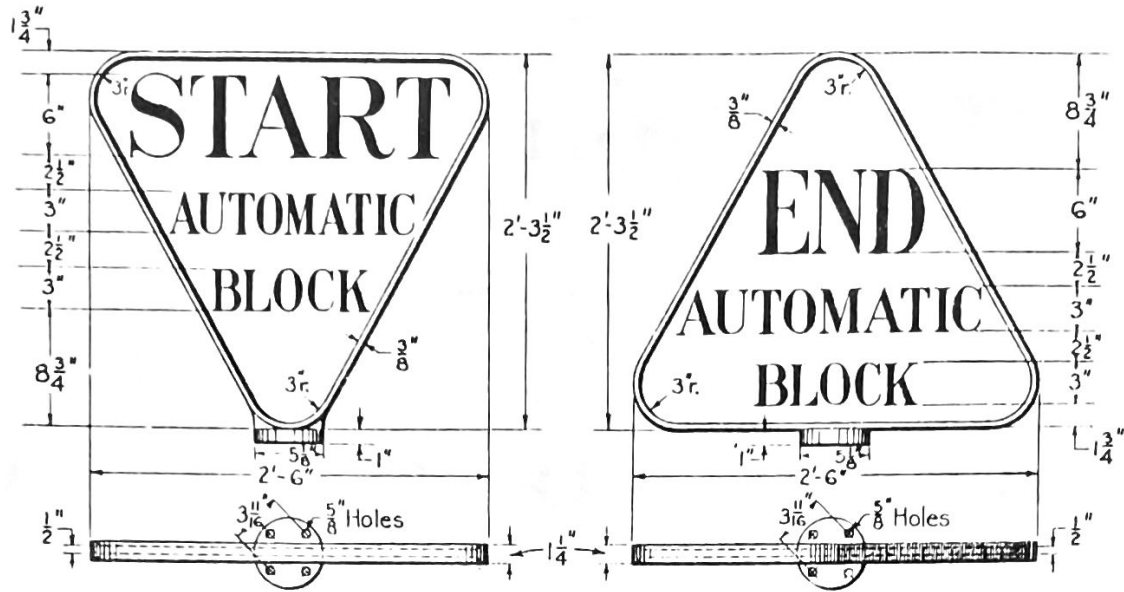


Target and post to be of cast iron, painted white.
 Base of post, for a height of 12" above summit of ballast mound, to be painted black.
 All numbers to be stenciled in black; no freehand lettering will be permitted.
 Standard ballast mound for cast iron posts to be neatly placed around base.
 Post to be planted 3'-0" in ground.
 Place post a minimum distance of 11ft. from center line of track, face target at right angles to track.
 OBTAIN STENCIL FOR STANDARD MILE POST FIGURES-FILE 21/733.



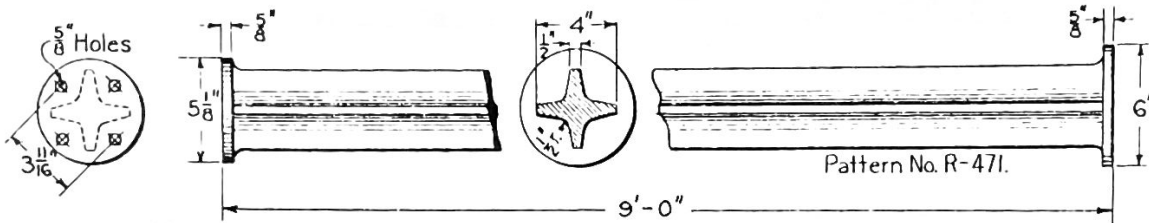
MILE POST

CORRECT: *J. H. Lattin* ASST. CHIEF ENGR M.W.&S.
 APPROVED: *B. Hermann* CHIEF ENGINEER M.W.&S.
 APPROVED: *W. C. Coker* VICE PRES. & GEN'L MGR.



No. 1
Pattern No. R-494.

No. 2
Pattern No. R-495.



Cast iron post and targets with 1/8" relief letters on one face.
 Letters, beading around targets, and post for a height of 12" above the summit of ballast mound, to be painted black. Paint all other portions white.
 Post to be planted 3'-0" in ground.
 Standard ballast mound for cast iron posts to be neatly placed around base.
 Place post a minimum distance of 11 ft. from center line of track with face of target at right angles. Target No. 1, Pattern No. R-494, to be placed 2 ft. to the right of first automatic signal. Target No. 2, Pattern No. R-495, to be placed to the right of last insulated rail joint.



AUTOMATIC BLOCK SIGN

CORRECT:

J. H. Lattin

ASST. CHIEF ENGR. M. W. & S.

APPROVED:

B. Herman

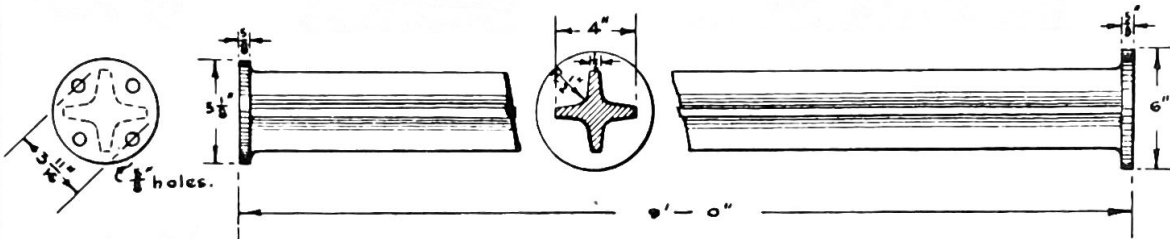
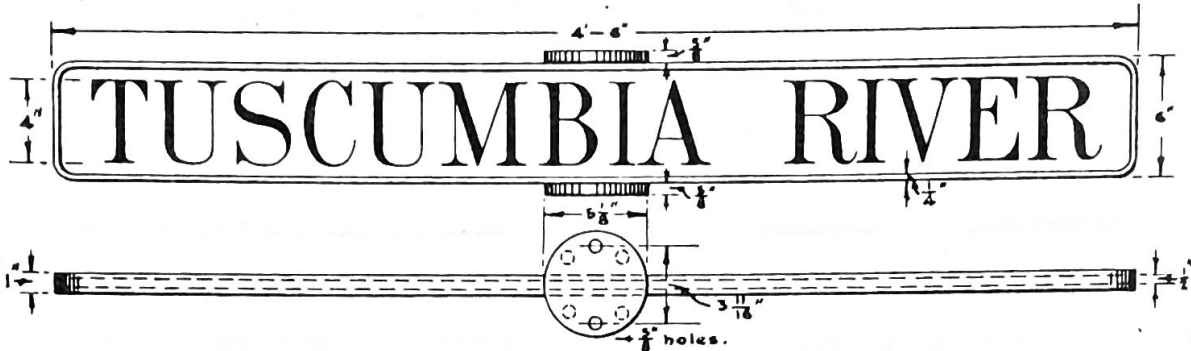
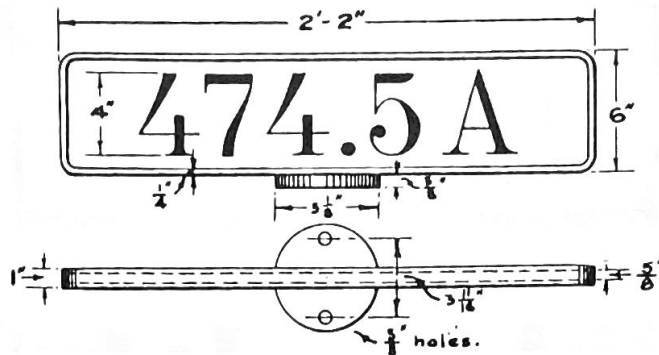
CHIEF ENGINEER M. W. & S.

APPROVED:

E. Horan

VICE PRES. & GEN'L. MGR.

Numerical target
 Pattern No. R-726.
 Bridge Sign
 Pattern No. R-725.
 Standard Post
 Pattern No. R-471.



Name of stream and mile post reference to be stenciled on both sides.
 Targets and post to be of cast iron, painted white.
 Beading around targets, and base of post for a distance of 12" above the summit of mound, to be painted black.
 All letters and numbers to be stenciled in black; no freehand lettering will be allowed.
 Supervisors must see that the reference numbers and letters are correct.
 End of sign shall be not less than 9' from center line of track.
 The position of sign will be at the north or east end of structure, and on the west or north side of track respectively, and shall not be more than 50' from structure where practicable.
 Standard ballast mound for cast iron posts to be neatly placed around base and whitewashed, even if necessary to build out or bench the fill.

SOUTHERN  RAILWAY.

BRIDGE SIGN

CORRECT

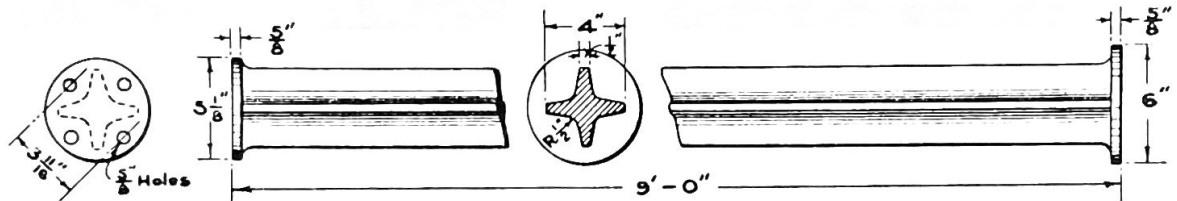
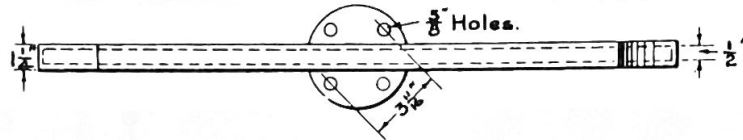
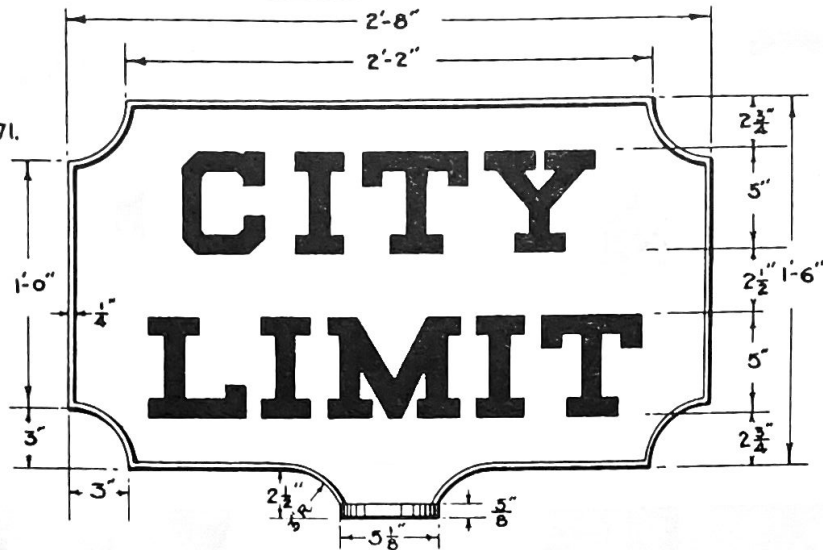
APPROVED:

APPROVED:

J. H. Gallin *B. Herman* *E. W. ...*

ASST. CHIEF ENGR. M.W. & S. CHIEF ENGINEER M.W. & S. VICE PRES. & GEN'L. MGR.

Target Pattern
No. R-482.
Standard Post
Pattern No. R-471.



Cast iron post and target with $\frac{1}{8}$ " relief letters on both faces.
Letters, and beading around target, and base of post 12" above summit of ballast mound, to be painted black.

Paint sign and post white.

Standard ballast mound for cast iron posts to be neatly placed around base and whitewashed.

Place post a minimum distance of 11 ft. from center line of track with face at right angles.

Roadmaster must see that sign is accurately placed and position changed as corporation limits are shifted.



CITY LIMIT SIGN

CORRECT:

J. H. Galtin

ASST. CHIEF ENGR. M.W. & S.

APPROVED:

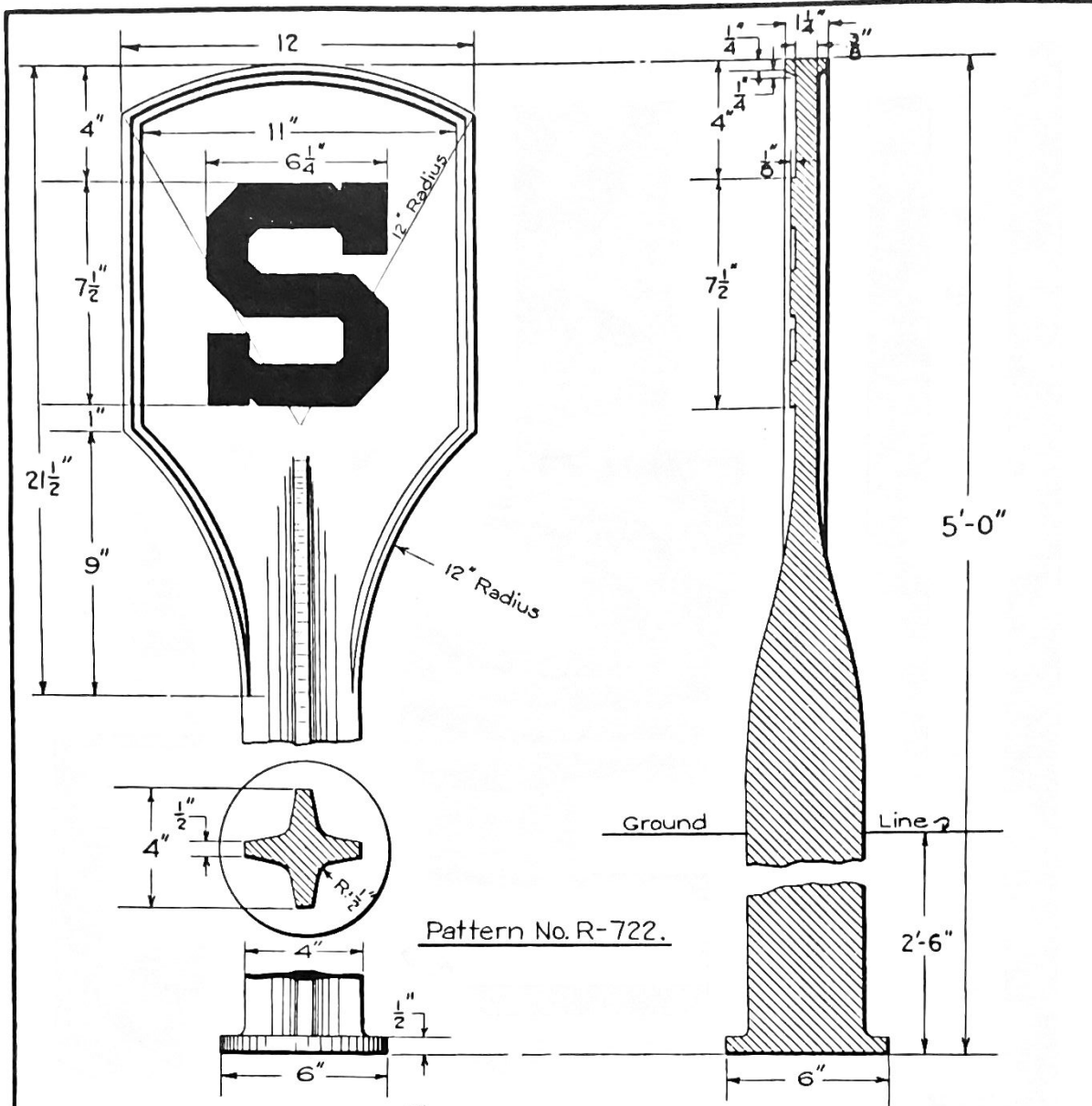
B. Herman

CHIEF ENGINEER M.W. & S.

APPROVED:

E. W. ...

VICE PRES. & GEN'L. MGR.

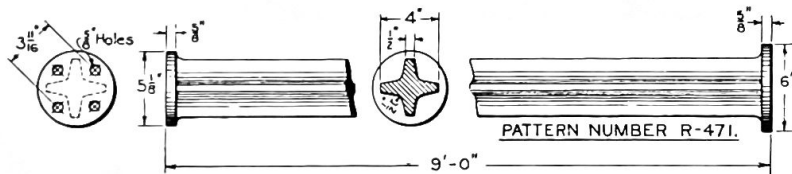
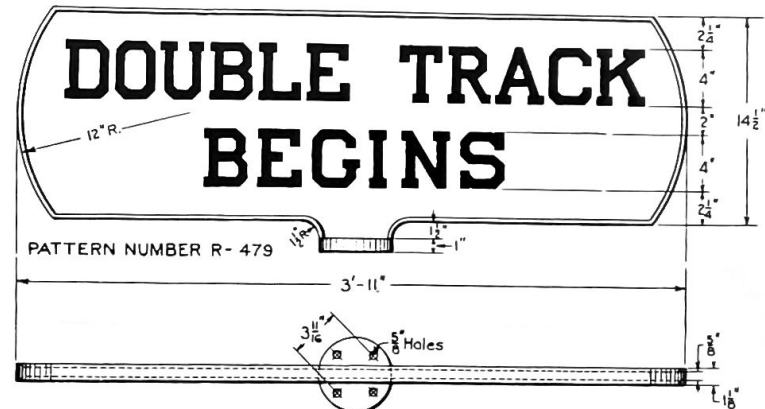
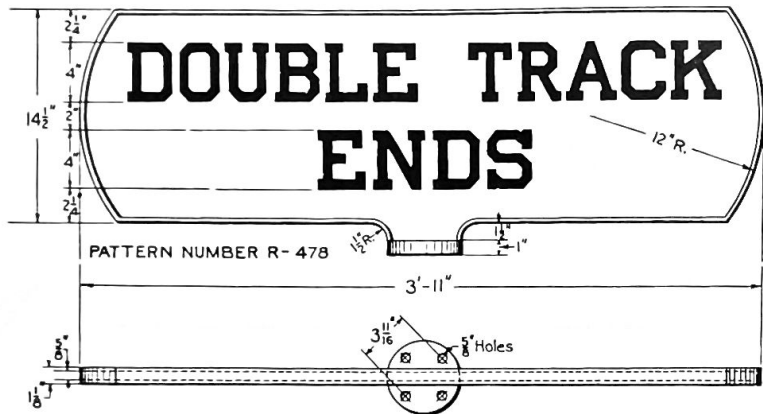


Sign to be of cast iron with $\frac{1}{8}$ " relief letter on one side.
 Letter, beading around target, and post for a height of 6" above the summit of ballast mound, to be painted black. Paint all other portions white.
 Post to be planted 2'-6" in ground.
 Standard ballast mound for cast iron posts to be neatly placed around base.
 Place post a minimum distance of 8 ft. from center line of track, face target at right angles.

SOUTHERN  RAILWAY

DERAIL SIGN

CORRECT: *A. L. Galtier* APPROVED: *B. Herman* APPROVED: *E. W. ...*
 ASST. CHIEF ENGR. M. W. & S. CHIEF ENGINEER M. W. & S. VICE PRES. & GEN'L. MGR.



NOTES:-

Post and target to be of cast iron. Target to have $\frac{1}{8}$ " relief letters on one face. Letters, beading around target, and base of post for a height of 12' above summit of ballast mound, to be painted black. Remaining portions of post and target to be painted white. Standard ballast mound for cast iron posts to be neatly placed around base and whitewashed. Place post a minimum distance of 11 ft. from center line of track with face at right angles.

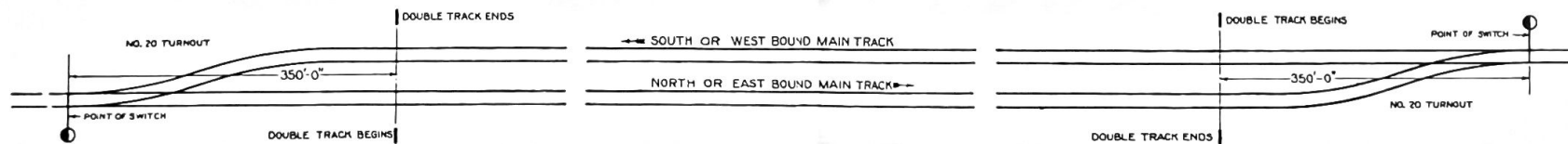
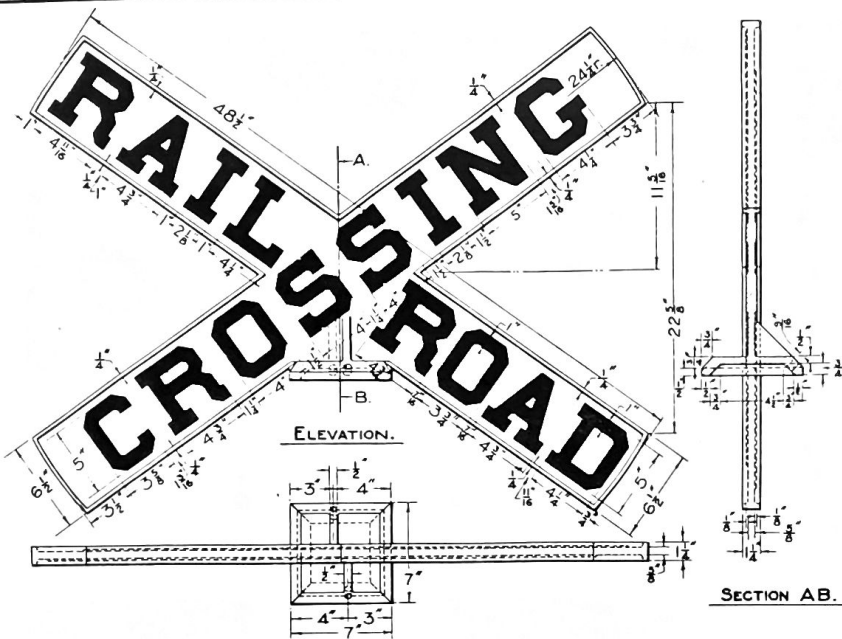


DIAGRAM
SHOWING
LOCATION FOR DOUBLE TRACK SIGNS

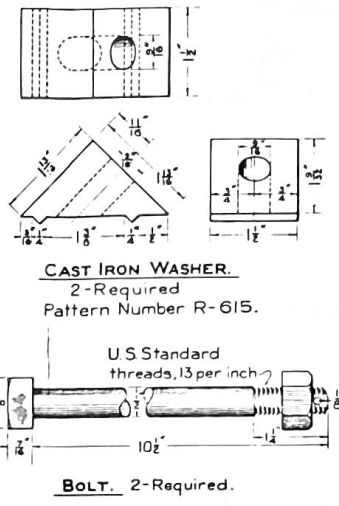
SOUTHERN  RAILWAY
DOUBLE TRACK SIGN

CORRECT: *H. Galtin* ASST. CHIEF ENGR. M. W. & S. APPROVED: *B. Kruman* CHIEF ENGINEER M. W. & S. APPROVED: *E. Glazman* VICE PRES. & GENL. MGR.



ELEVATION.

SECTION AB.

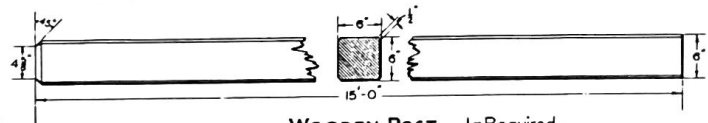


CAST IRON WASHER.
2-Required
Pattern Number R-615.

BOLT. 2-Required.

PLAN.

Pattern Number R-616.



WOODEN POST 1-Required.
6x6" Surfaced four sides.

N.B.

THIS SIGN, PATTERN NUMBERS R-615, R-616, TO BE USED ONLY IN STATES OF VIRGINIA AND KENTUCKY; its erection and maintenance is covered by the following law, which is common to both states, "Every railroad company shall cause signal boards, well supported by posts or otherwise, at such heights as to be easily seen by travelers, and not obstructing travel, containing on each side, in capital letters, at least 5 inches high, the following inscription: 'Railroad Crossing', to be placed, and constantly maintained, at each public highway where it is crossed by the railroad at the same level; but such boards need not be put up in cities or towns, unless required by the local authorities thereof.

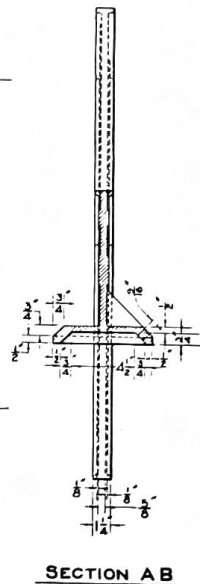
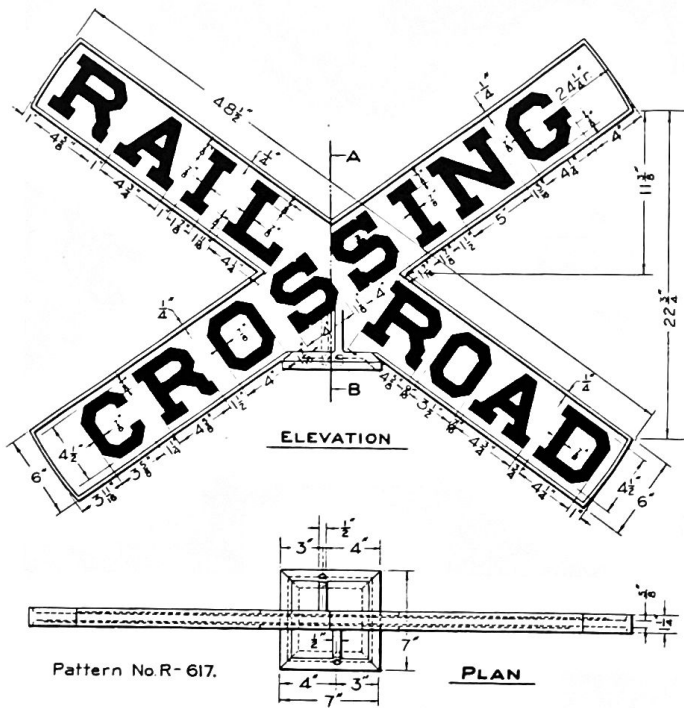
NOTES:

1. Target to be of cast iron with $\frac{1}{8}$ " letters in relief on both sides.
2. Posts to be of long leaf yellow pine surfaced four sides. Chamfering will be done in the field.
3. In ordering these signs, cover target, cast iron washer, and bolts, with one requisition, and make separate requisition for posts.
4. Sign shall be located on the right side of highway which it governs, in such position that it will not interfere with travel, and blades of target must clear center line of track by at least 10 feet. Target shall be placed at right angles to center line of highway. Care must be taken to erect the post plumb. Supervisors will personally see that sign is erected in such position that it will be clearly visible when approached along the highway.
5. Post to be planted 3'-6" in ground.
6. Paint letters, beading around target, and post for a distance of 2'-6" above surface of ballast mound, black.
7. Paint body of target and remaining portion of post white.
8. Section foreman will see that space within a radius of 5 ft. from the post is kept free from grass.
9. Standard ballast mound for wooden posts to be neatly placed around base and whitewashed.



GRADE HIGHWAY CROSSING SIGN
VIRGINIA AND KENTUCKY

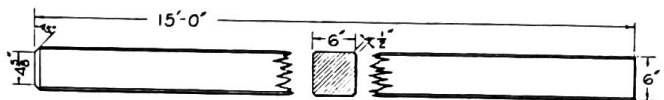
CORRECT: *J. H. Gatten* ASST CHIEF ENGR M. W. & S.
APPROVED: *B. H. Horman* CHIEF ENGINEER M. W. & S.
APPROVED: *E. H. ...* VICE PRES. & GEN'L. MGR.



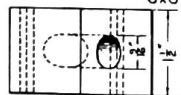
Pattern No R-617.

PLAN

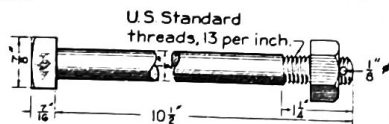
SECTION A B



WOODEN POST 1-Required
6x6 Surfaced four sides.



CAST IRON WASHER 2-Required
Pattern Number R-615.



BOLT. 2-Required.

N. B.

THIS SIGN, PATTERN NUMBERS R-615, R-617, TO BE USED IN SOUTH CAROLINA, ALABAMA, AND MISSISSIPPI; Its erection and maintenance in these states is governed by laws which are quoted below.

SOUTH CAROLINA: "Every railroad corporation shall cause signs to be placed, and constantly maintained, alongside of each public road or street where the same is crossed by the railroad on the same level. Said sign shall be elevated so as to be easily seen by travelers, and on each side of the same shall be printed in large letters the words 'Railroad Crossing'. This does not apply to streets in cities, towns, or villages, unless required by the officers having charge of such streets."

ALABAMA: "Every railroad company must erect, at all points where its said road crosses any public road, at a sufficient elevation to admit of the free passage of vehicles of every kind, a sign, with large and distinct letters placed thereon, to give notice of the proximity of the railroad and warn persons of the necessity of looking out for the cars."

MISSISSIPPI: "Every railroad company shall cause a board to be erected and kept up, upon a post or frame sufficiently high, at every place where the railroad may cross a highway, with this inscription: 'Look out for the locomotive, or this, Railroad Crossing'."

THIS SIGN IS ALSO TO BE USED IN NORTH CAROLINA AND GEORGIA; but its erection and maintenance are not governed by any laws in these states.

NOTES:

1. Target to be of cast iron with $\frac{1}{8}$ " letters in relief on both sides.
2. Post to be of long leaf yellow pine surfaced four sides. Chamfering will be done in the field.
3. In ordering these signs cover target, cast iron washer, and bolts with one requisition, and make separate requisition for posts.
4. Sign shall be located on the right side of highway which it governs, in such position that it will not interfere with travel, and blades of target must clear center line of track by at least 10 feet. Target shall be placed at right angles to center line of highway. Care must be taken to erect the post plumb. Supervisors will personally see that sign is erected in such position that it will be clearly visible when approached along the highway.
5. Post to be planted 3'-6" in ground.
6. Paint letters, beading around target, and post for a distance of 2'-6" above surface of ballast mound, black.
7. Paint body of target and remaining portion of post white.
8. Section foreman will see that space within a radius of 5 ft. from the post is kept free from grass.
9. Standard ballast mound for wooden posts to be neatly placed around base and whitewashed.

THE LAWS OF TENNESSEE DO NOT REQUIRE THE ERECTION OF SIGNS AT HIGHWAY CROSSINGS.

SOUTHERN



RAILWAY

GRADE HIGHWAY CROSSING SIGN

NORTH & SOUTH CAROLINA, GEORGIA, ALABAMA, & MISSISSIPPI.

CORRECT

APPROVED

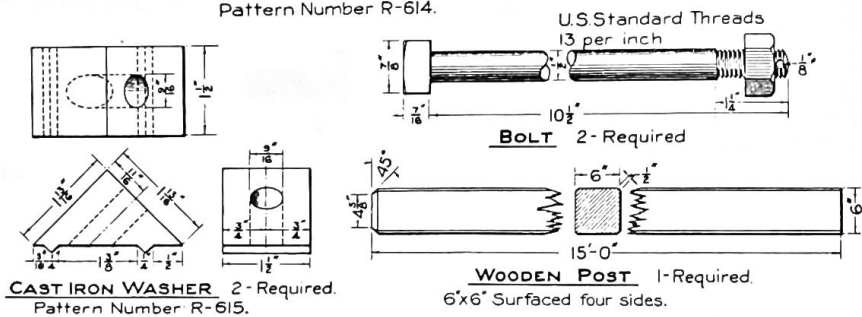
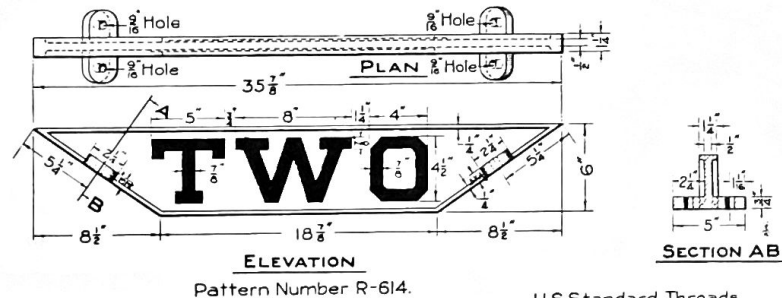
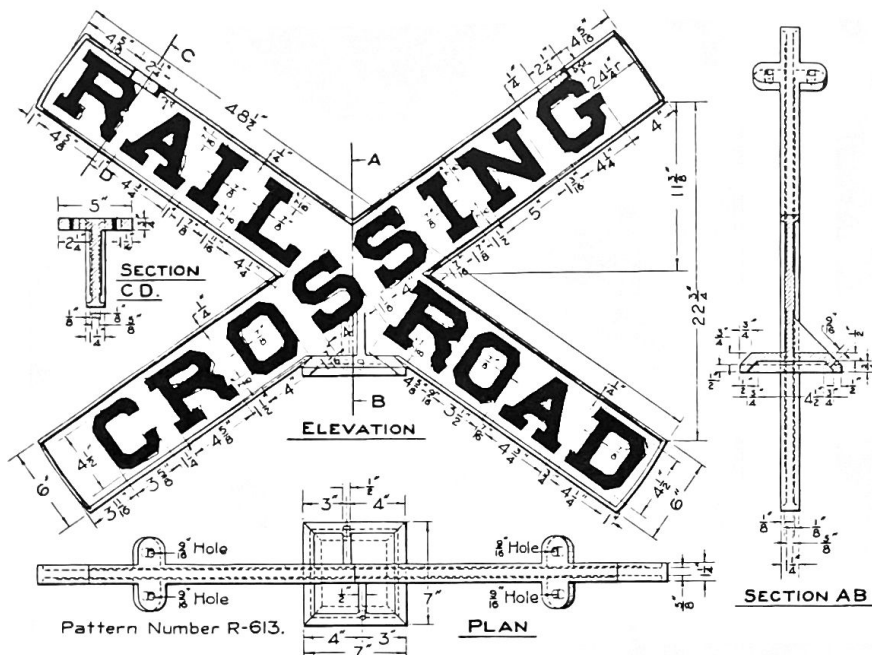
APPROVED

J. H. Gallin

B. Herman

W. C. ...

ASST. CHIEF ENGR. M. W. & S. CHIEF ENGINEER M. W. & S. VICE PRES & GENL. MGR.



N. B.

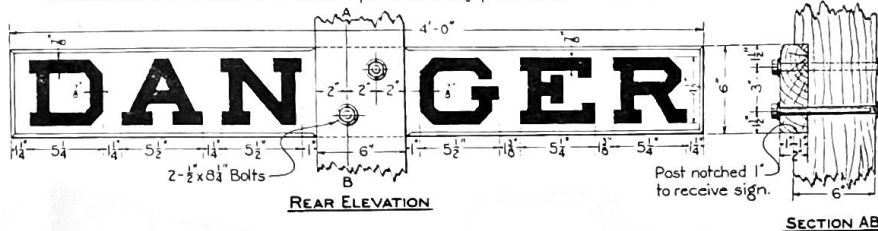
THIS SIGN, PATTERN NUMBERS R-613, R-614, R-615, TO BE USED IN ILLINOIS AND INDIANA: its erection and maintenance in these states is governed by laws which are quoted below:

ILLINOIS: Every railroad corporation shall cause boards, well supported by posts or otherwise, to be placed and constantly maintained upon each public road or street where the same is crossed by its railroad on the same level. Said boards shall be elevated so as not to obstruct the travel, and to be easily seen by travelers. On each side of said boards shall be painted in capital letters of at least the size of nine inches each, the words 'Railroad Crossing' or 'Look out for the cars.' This does not apply to cities, towns, or villages unless required by the authorities thereof.

INDIANA: Crossing signs to be placed at right angles to the highway where possible, substantial upright posts 13 or more feet in length, 3½ feet of which is in the ground, a board of wood or metal, no closer than 7 feet to the ground at right angles to this post, upon which shall appear the word 'Danger' in red or black letters; 2 other boards to be placed diagonally across each other just above the danger board, and on one of the two boards shall appear the word 'Railroad' and upon the other the word 'Crossing'; where two parallel railroads are crossed by the highway, and no further than 100 feet from each other, a board shall be placed at the top of the diagonal boards upon which the word 'Two' shall be written; the board on which the word 'danger' is written shall be at least 4 feet in length; the boards upon which the words 'Railroad Crossing' are written shall be not less than 5 feet in length; and where there are two railroads to be crossed the board with the word 'two' on it shall be not less than 2 feet in length; the size of all letters shall not be less than 6 inches high. Any other type of sign may be used with the consent of the Railroad Commission. The above does not apply to crossings within cities or incorporated towns. Sign indicated on this print approved by Public Service Commission of Indiana Oct. 1913.

NOTES:

1. Target to be of cast iron with ¾" letters in relief on both sides.
2. Post to be of long leaf yellow pine surfaced four sides. Chamfering will be done in the field.
3. In ordering these signs cover targets, cast iron washer, and bolts with one requisition, and make separate requisition for posts.
4. Sign shall be located on the right side of highway which it governs, in such position that it will not interfere with travel, and blades of target must clear center line of track by at least 10 feet. Target shall be placed at right angles to center line of highway. Care must be taken to erect the post plumb. Supervisors will personally see that sign is erected in such position that it will be clearly visible when approached along the highway.
5. 'Danger' board to be of long leaf yellow pine dressed, placed at right angles to post not closer than 7 ft. to top of ballast mound. Letters to be stenciled in black on both sides.
6. Post to be planted 3'-6" in ground.
7. Paint letters, beading around targets, and post for a distance of 2'-6" above ground, black.
8. Paint body of targets, and remaining portion of post, white.
9. Section foreman will see that space within a radius of 5 ft. from post is kept free from grass.
10. Standard ballast mound for wooden posts to neatly placed around base and whitewashed.



SOUTHERN RAILWAY



GRADE HIGHWAY CROSSING SIGN

ILLINOIS AND INDIANA

CORRECT:

M. W. & S.

APPROVED:

B. Herman

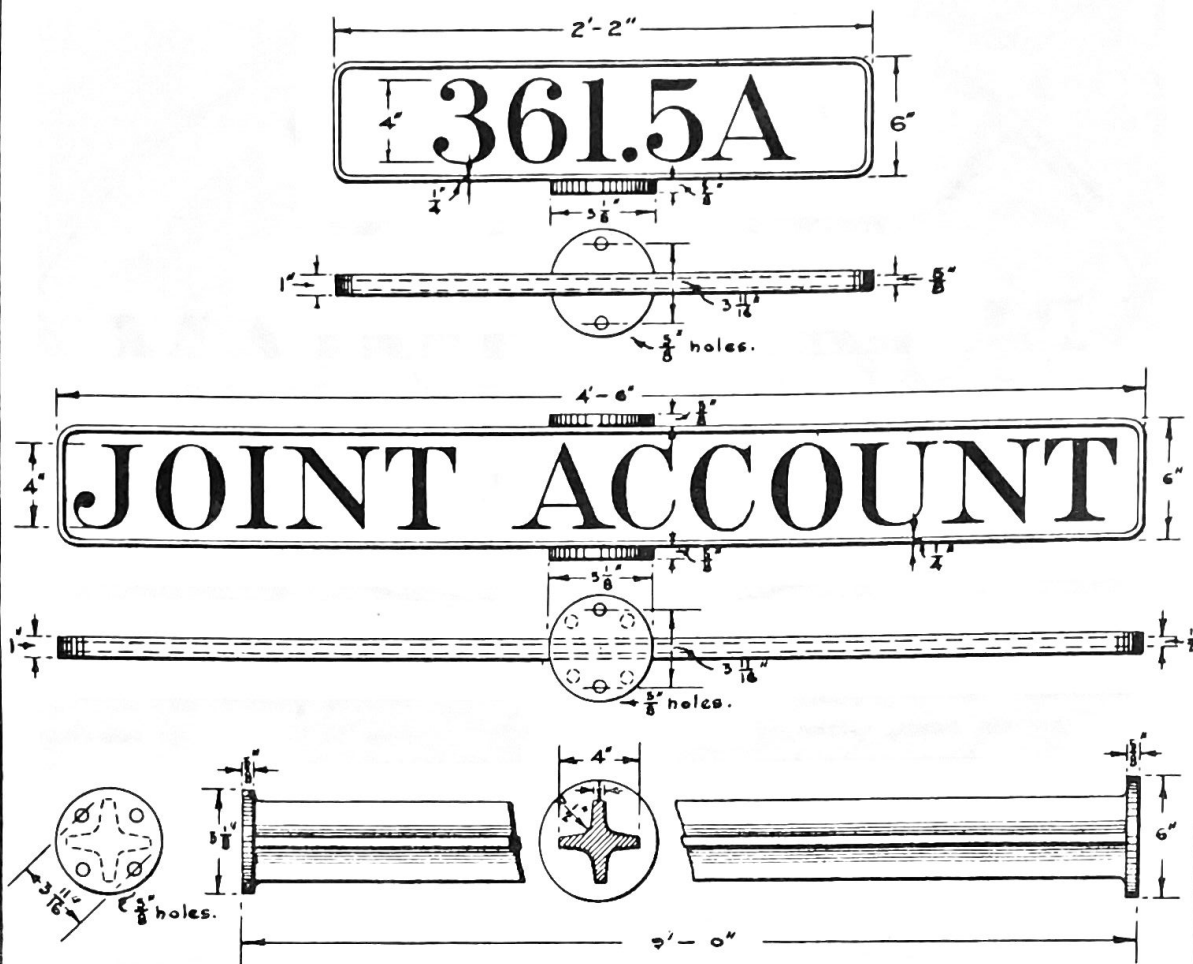
APPROVED:

E. W. ...

ASST. CHIEF ENGR. M. W. & S. CHIEF ENGINEER M. W. & S. VICE PRES. & GEN'L. MGR.

NOVEMBER 19, 1914.

Numeral target Pattern Number R-726.
 Joint Account target Pattern No. R-725.
 Standard Post Pattern Number R-471.



Standard ballast mound for cast iron posts to be neatly placed around base and whitewashed, even if necessary to build out or bench the fill.

Targets and post to be painted white; letters and figures to be stenciled on both sides. Beading around targets, and base of post for a distance of 12" above the summit of mound, to be painted black.

All letters and numbers to be stenciled in black; no freehand lettering will be allowed.

Supervisors must see that the reference numbers and letters are correct, and correspond with the joint account number assigned by the Auditor.

Face to parallel track at a distance of not less than 10' from center line, and post must be placed exactly opposite the ending and beginning point of any facilities maintained for joint account.

Targets and post to be of cast iron.

SOUTHERN  RAILWAY.

JOINT ACCOUNT SIGN

CORRECT: *J. H. Gallin* APPROVED: *B. Herman* APPROVED: *E. Chapman*
 ASST. CHIEF ENGR. M.W. & S. CHIEF ENGINEER M.W. & S. VICE PRES. & GEN'L. MGR.

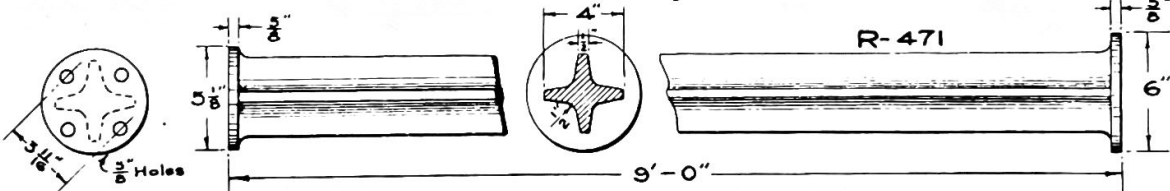
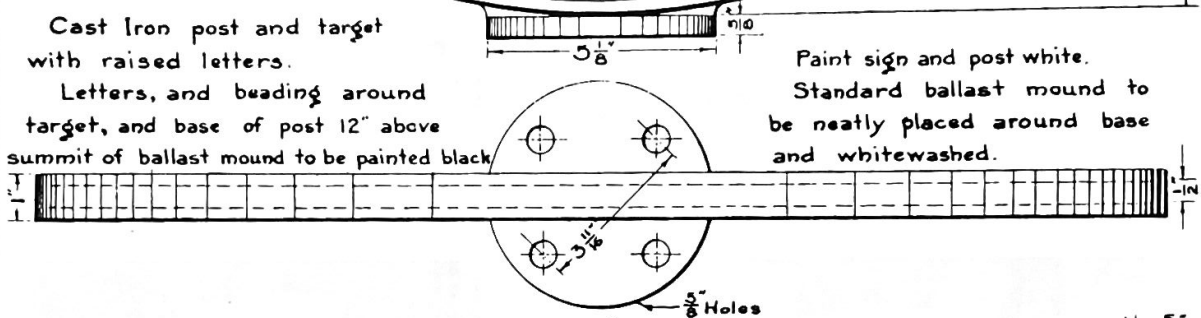
R-480



Cast Iron post and target with raised letters.

Letters, and beading around target, and base of post 12" above summit of ballast mound to be painted black.

Paint sign and post white. Standard ballast mound to be neatly placed around base and whitewashed.



To be placed, with face at right angles to track, opposite the exact point where maintenance of track ceases to devolve on Southern Railway, with face of target reading from the direction of part maintained by Southern Railway.

SOUTHERN RAILWAY



MAINTENANCE LIMIT SIGN

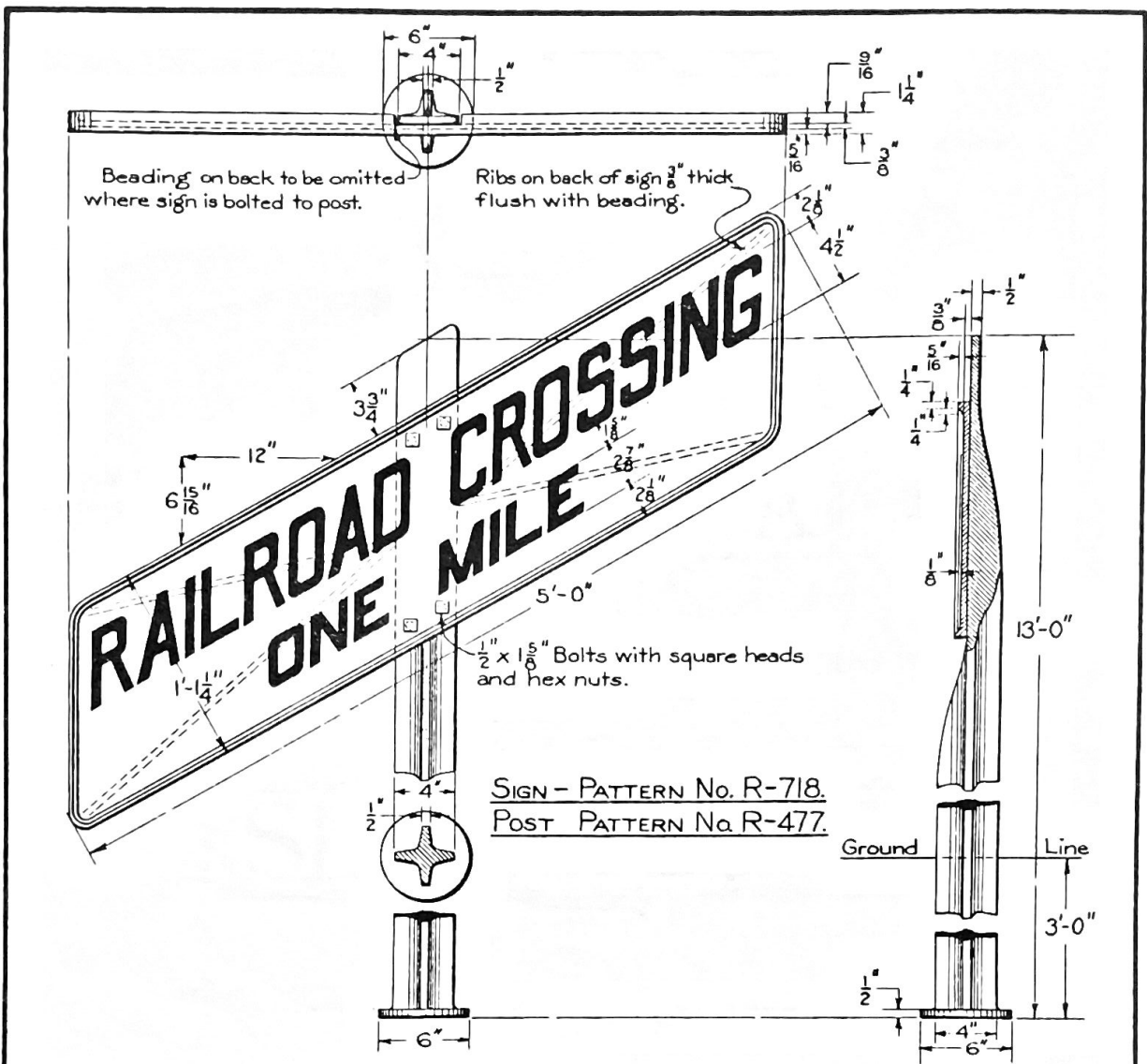
CORRECT

APPROVED:

APPROVED:

J. H. Green *B. Herman* *E. Hoopman*

ASST. CHIEF ENGR. M. W. & S. CHIEF ENGINEER M. W. & S. VICE PRES. & GENL. MGR.



Cast iron post and sign with $\frac{1}{8}$ " relief letters on one side.
 Letters, beading around sign, and post for a height of 12" above summit of ballast mound, to be painted black. Paint all other portions white.
 Standard ballast mound for cast iron posts to be neatly placed around base.
 Place post a minimum distance of 12 ft. from center line of track, face sign at right angles.
 Post to be planted 3'-0" in ground.



RAILROAD CROSSING WARNING

CORRECT:

J. H. Gallin

ASST. CHIEF ENG'R M.W.&S.

APPROVED:

B. Herman

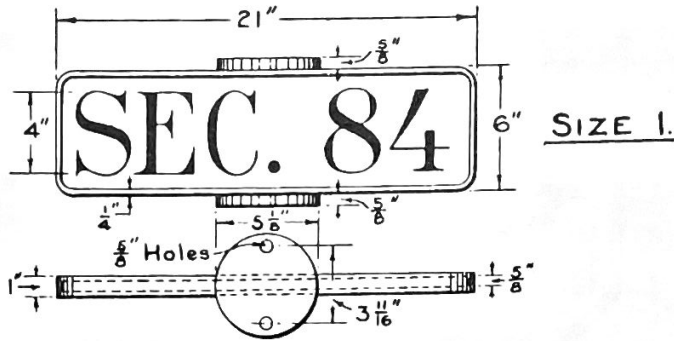
CHIEF ENGINEER M.W.&S.

APPROVED:

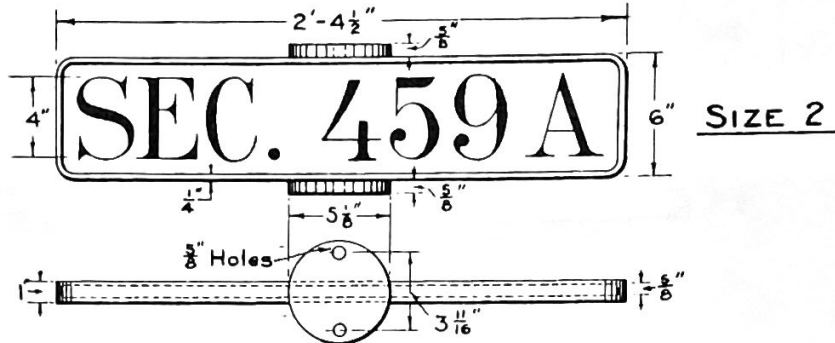
E. Hoopman

VICE PRES. & GEN'L. MGR.

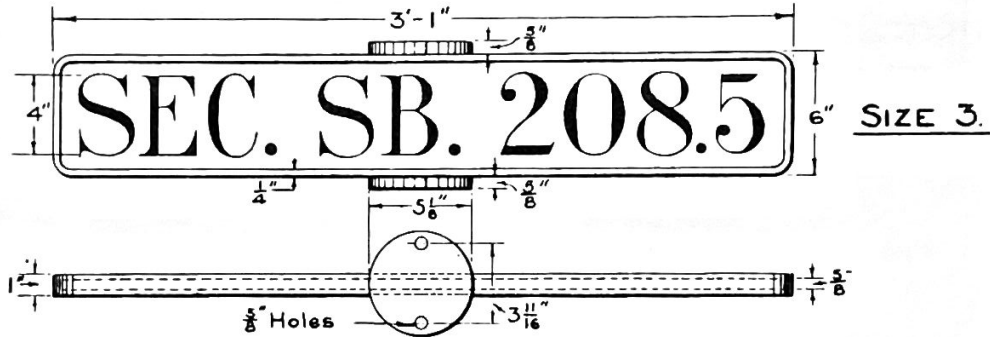
Target Pattern
No. R-488.



Target Pattern
No. R-489.



Target Pat.
No. R-490.



TO BE USED IN COMBINATION WITH STANDARD MILE POST AND CAP.

Each section to be designated by the line initial and lesser mile post number at its point of beginning.

Cast iron target, painted white with black beading, placed at right angles to track. Stencil in black on each side respectively the section designation facing that side. Size of sign must be adapted to the lettering.

SOUTHERN



RAILWAY

SECTION LIMIT SIGN

CORRECT:

J. H. Galtin

ASST. CHIEF ENG'R. M.W. & S.

APPROVED:

B. Herman

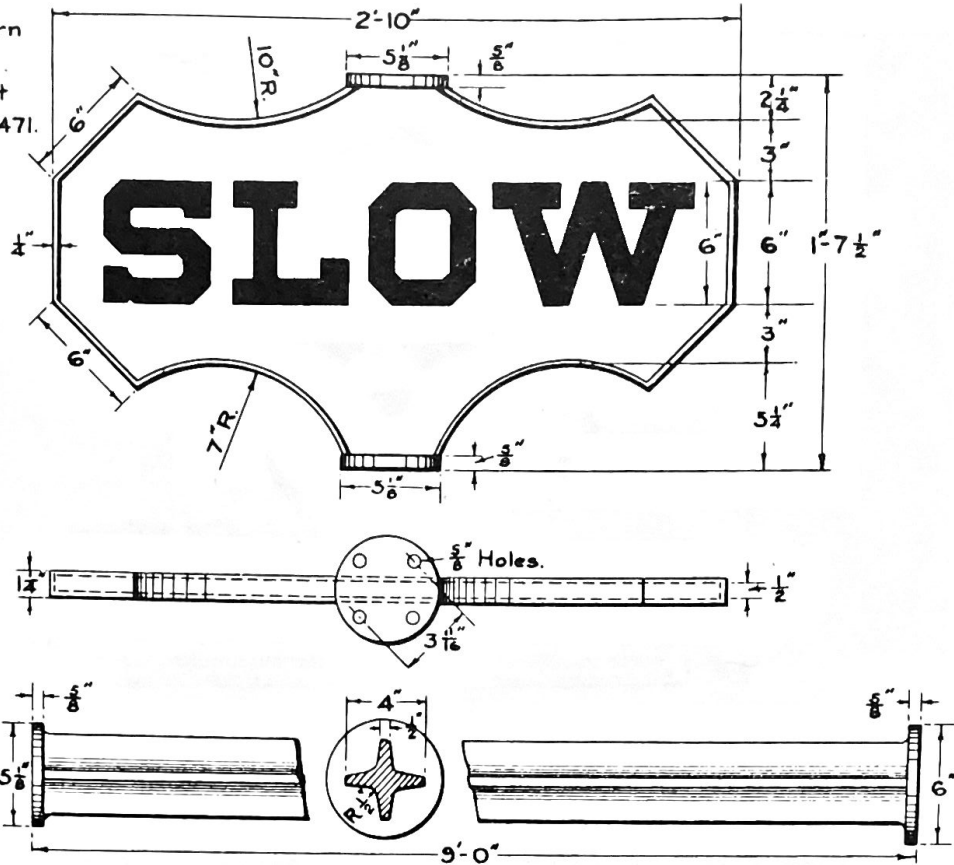
CHIEF ENGINEER M.W. & S.

APPROVED:

E. Chapman

VICE PRES. & GEN'L. MGR.

Target Pattern
No. R-487.
Standard Post
Pattern No. R-471.



Cast iron post and target with $\frac{1}{8}$ " relief letters on one face.
 Letters, and beading around target, and base of post 12" above summit
 of ballast mound, to be painted black.
 Paint sign and post white.
 Standard ballast mound for cast iron posts to be neatly placed around base
 and whitewashed.
 Place post a minimum distance of 11ft. from center line of track with
 face at right angles.
 Location to be indicated by Superintendent and when directed by him may
 be used in combination with speed limit sign.
 One sign to be located on right side of track approaching point of restricted
 speed from each direction.

SOUTHERN  RAILWAY

SLOW SIGN

CORRECT:

J. H. Gathin

APPROVED:

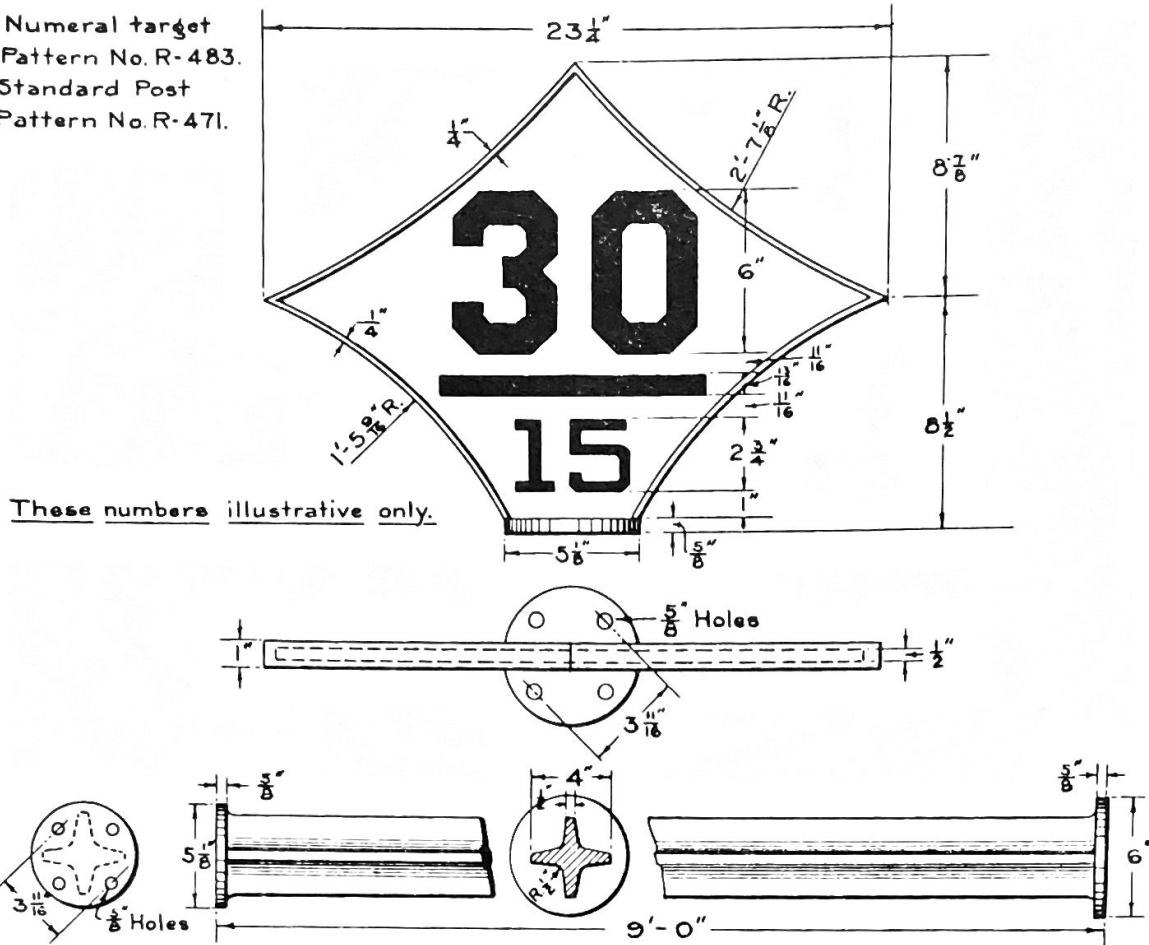
B. Herman

APPROVED:

E. H. ...

ASST. CHIEF ENGR. M. W. & S. CHIEF ENGINEER M. W. & S. VICE PRES. & GENL. MGR.

Numeral target
 Pattern No. R-483.
 Standard Post
 Pattern No. R-471.



These numbers illustrative only.

Target and post to be of cast iron, painted white.
 Beading around target, and base of post for a distance of 12" above summit of ballast mound, to be painted black.
 All numbers to be stenciled in black; no freehand lettering will be allowed.
 Standard ballast mound for cast iron posts to be neatly placed around base and whitewashed.
 Place post a minimum distance of 11ft. from center line of track with face at right angles.
 Upper line large figures, to indicate speed limit for passenger trains.
 Lower line small figures, to indicate speed limit for freight trains.
 Signs to be stenciled for restriction of speed as instructed by Superintendent.



SPEED LIMIT SIGN

CORRECT:

J. H. Galtin

ASST. CHIEF ENGR. M. W. & S.

APPROVED:

B. Herman

CHIEF ENGINEER M. W. & S.

APPROVED:

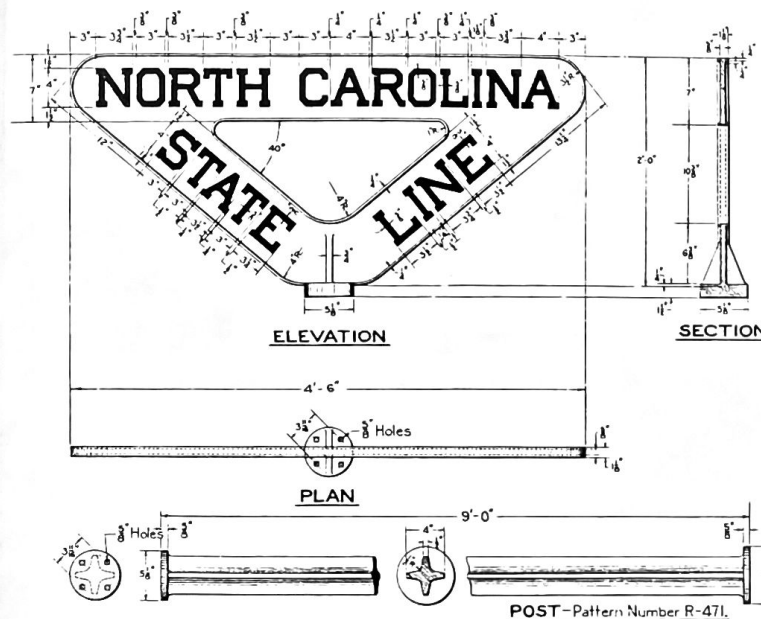
E. W. ...

VICE PRES. & GEN'L. MGR.

**DIMENSIONS TO BE USED IN CASTING NAMES OF STATES
ON STANDARD STATE LINE SIGNS.**



PATTERN NUMBER	STATE LINE	PATTERN NUMBER	STATE LINE
R - 381	Virginia - North Carolina	R - 388	Tennessee - Alabama
R - 382	North Carolina - South Carolina	R - 389	Alabama - Mississippi
R - 383	South Carolina - Georgia	R - 390	Mississippi - Tennessee
R - 384	North Carolina - Tennessee	R - 391	Georgia - Alabama
R - 385	Tennessee - Kentucky	R - 392	Georgia - North Carolina
R - 386	Tennessee - Virginia	R - 393	Illinois - Indiana
R - 387	Tennessee - Georgia	R - 394	Indiana - Kentucky



NOTES:

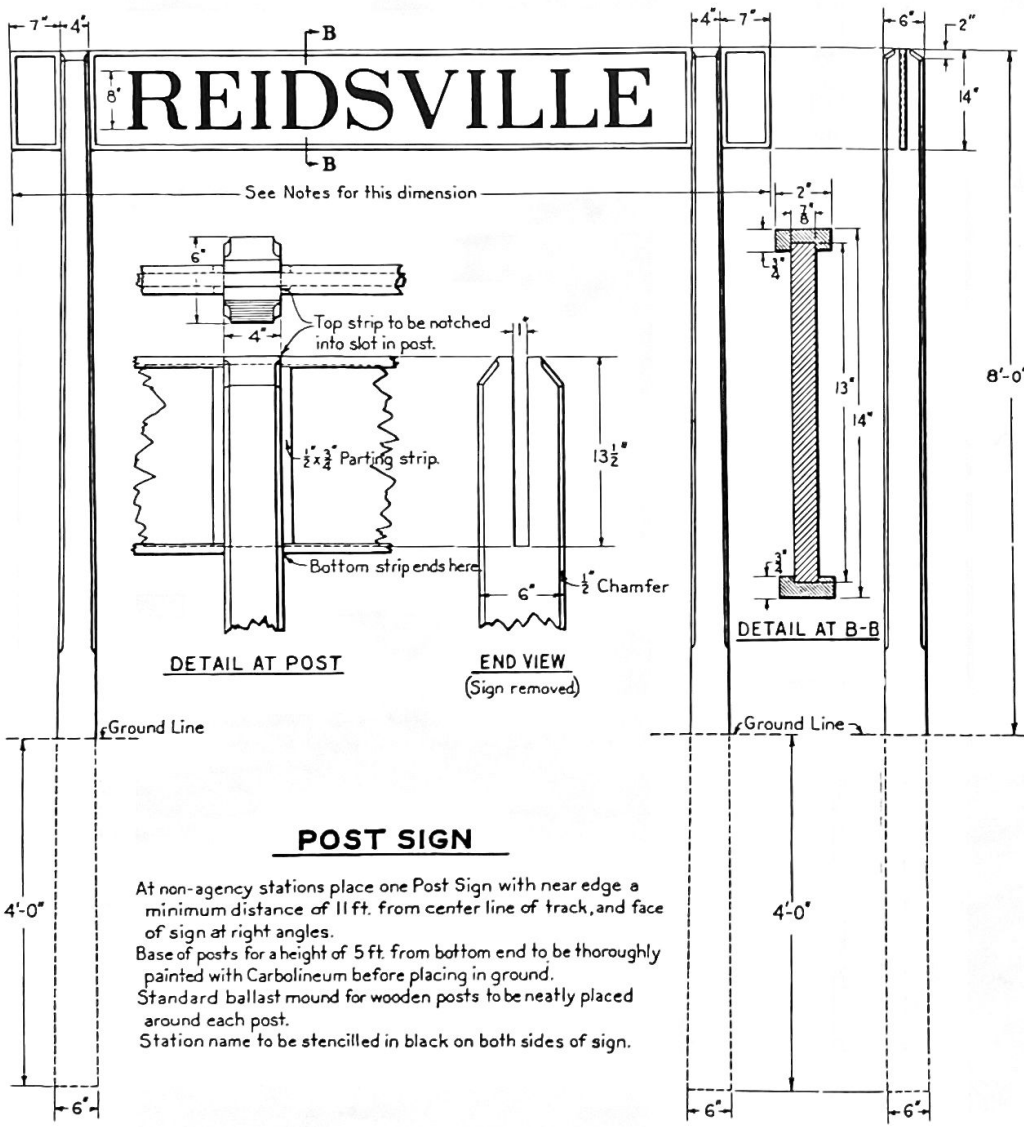
- Post and target to be of cast iron. Target to have $\frac{1}{8}$ " relief letters on both faces.
- Letters, beading around target, and base of post for a height of 12' above summit of ballast mound, to be painted black. Remaining portions of post and target to be painted white.
- Standard ballast mound for cast iron posts to be neatly placed around base and whitewashed.
- Place post a minimum distance of 11ft. from center line of track with face at right angles. Post to be planted 3'-0" in ground. Roadmaster must see that sign is accurately placed, and that name of state faces state to which it refers.
- A PATTERN NUMBER IS GIVEN FOR DIMENSIONS OF LETTERING FOR EACH COMBINATION OF STATE NAMES. ALL OTHER DIMENSIONS OF SIGN ARE FIXED. IN ORDERING, CARE MUST BE TAKEN THAT CORRECT PATTERN NUMBER, FOR COMBINATION DESIRED, IS TAKEN FROM THE ACCOMPANYING TABLE.



STATE LINE SIGN

CORRECT: *J. H. Galtin* APPROVED: *B. Herman* APPROVED: *E. Thompson*

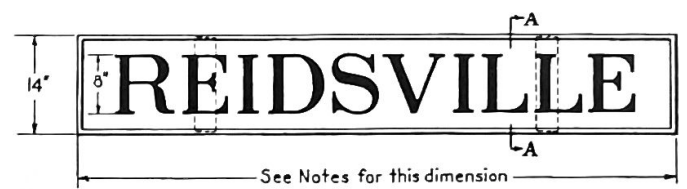
ASST. CHIEF ENGR. M. W. & S. CHIEF ENGINEER M. W. & S. VICE PRES. & GEN'L. MGR.



DETAIL AT POST

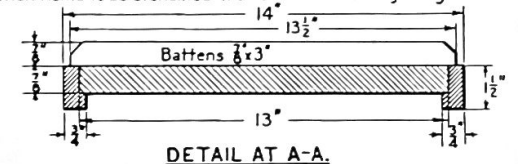
END VIEW
(Sign removed)

DETAIL AT B-B



DEPOT SIGN

Place Depot Sign at each end of Station Building.
See Standard Depot Sign Attachment for method of affixing sign to roof.
Station name to be stencilled in black on front of sign only.



DETAIL AT A-A

Notes:-

- All lumber to be seasoned long leaf yellow pine.
- Length of sign to be governed by space required for station name.
- Letters to be stencilled in black, beading strips and posts for a height of 18" above summit of ballast mound to be painted black. Paint all other portions of sign and post white.
- When repainting sign, old paint to be burnt off surface with blow torch and surface redressed.

POST SIGN

At non-agency stations place one Post Sign with near edge a minimum distance of 11 ft. from center line of track, and face of sign at right angles.
Base of posts for a height of 5 ft. from bottom end to be thoroughly painted with Carbolineum before placing in ground.
Standard ballast mound for wooden posts to be neatly placed around each post.
Station name to be stencilled in black on both sides of sign.



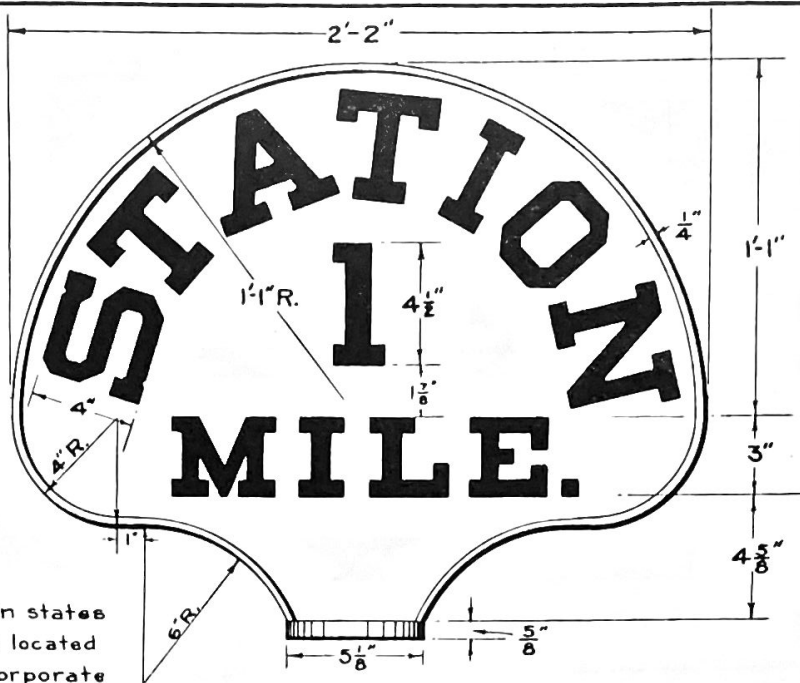
STATION SIGN

CORRECT: *J. H. Gattin*
ASST. CHIEF ENGR. M. W. & S.

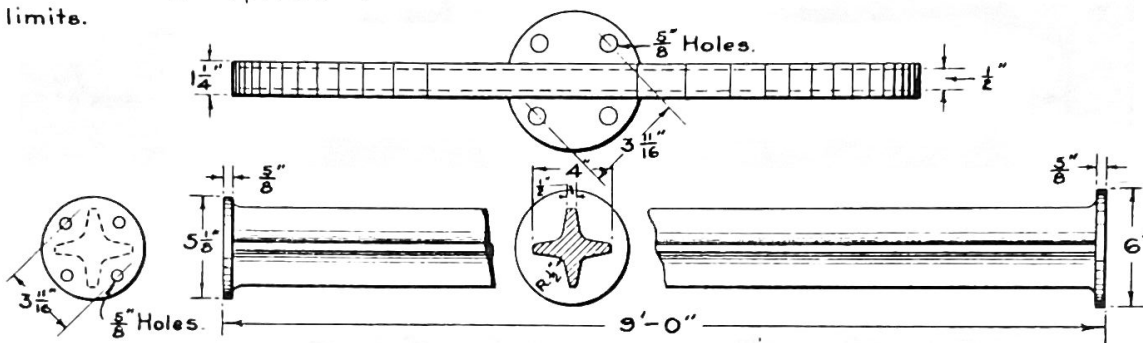
APPROVED: *B. Herman*
CHIEF ENGINEER M. W. & S.

APPROVED: *E. W. Hooper*
VICE PRES. & GENL. MGR.

Target Pattern
No. R-486.
Standard Post
Pattern No. R-471.



Laws of certain states
require sign to be located
one mile from corporate
limits.



Cast iron post and target with $\frac{1}{8}$ " relief letters on one face.
Letters, and beading around target, and base of post 12" above summit of ballast mound, to be painted black.
Paint sign and post white.
Standard ballast mound for cast iron posts to be neatly placed around base and whitewashed.
Place post a minimum distance of 11ft. from center line of track with face at right angles.
Locate one sign right side of track approaching station from each direction.



STATION WARNING SIGN

CORRECT:

J. H. Gattin
ASST. CHIEF ENGR. M.W. & S.

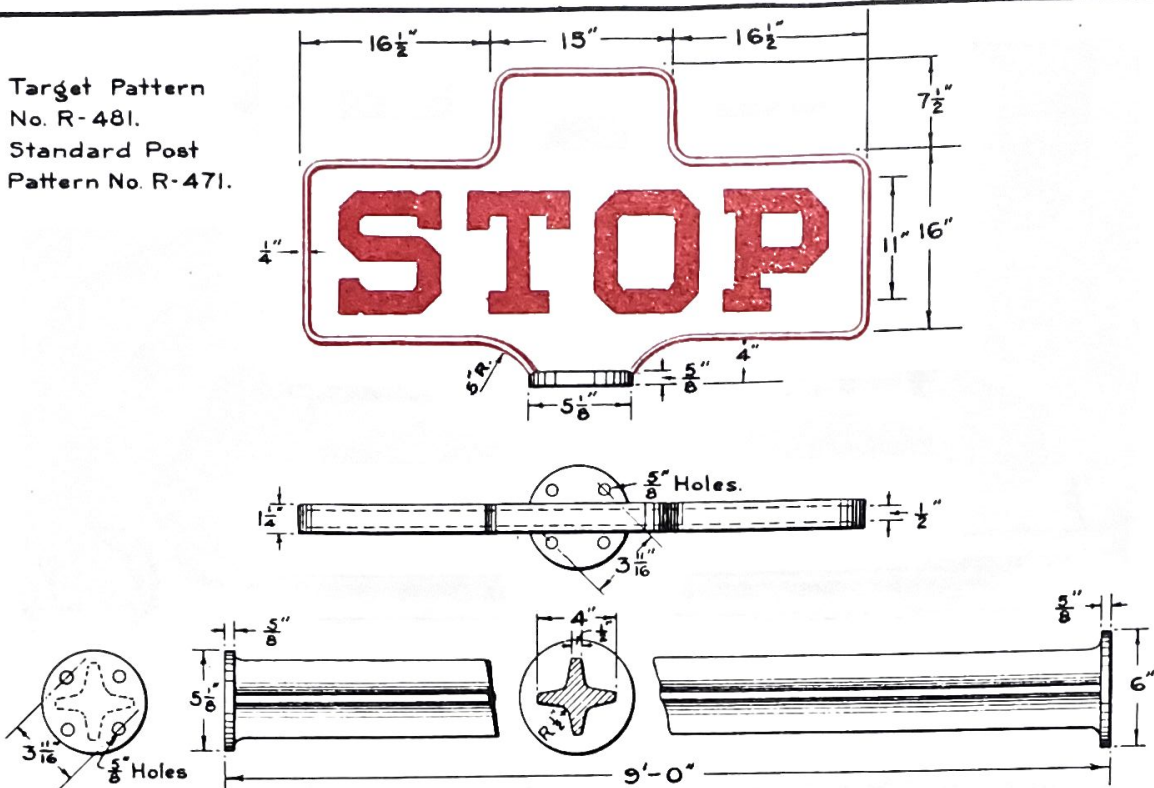
APPROVED:

B. Herman
CHIEF ENGINEER M.W. & S.

APPROVED:

E. W. ...
VICE PRES. & GEN'L. MGR.

Target Pattern
No. R-481.
Standard Post
Pattern No. R-471.



Cast iron post and target with $\frac{1}{8}$ " relief letters on one face.
Letters, and beading around target to be painted red; base of post 12" above
summit of ballast mound, to be painted black.

Paint sign and post white.

Standard ballast mound for cast iron posts to be neatly placed around
base and whitewashed.

Place post a minimum distance of 11ft. from center line of track with
face at right angles.

When not protected by interlocking signals, one sign to be located right side
of track not over 100' in each direction from railroad crossings at grade, and
ends of draw bridges; other locations as indicated by Superintendent.

SOUTHERN  RAILWAY

STOP SIGN

CORRECT:

J. H. Gattin

ASST. CHIEF ENGR. M. W. & S.

APPROVED:

B. Herman

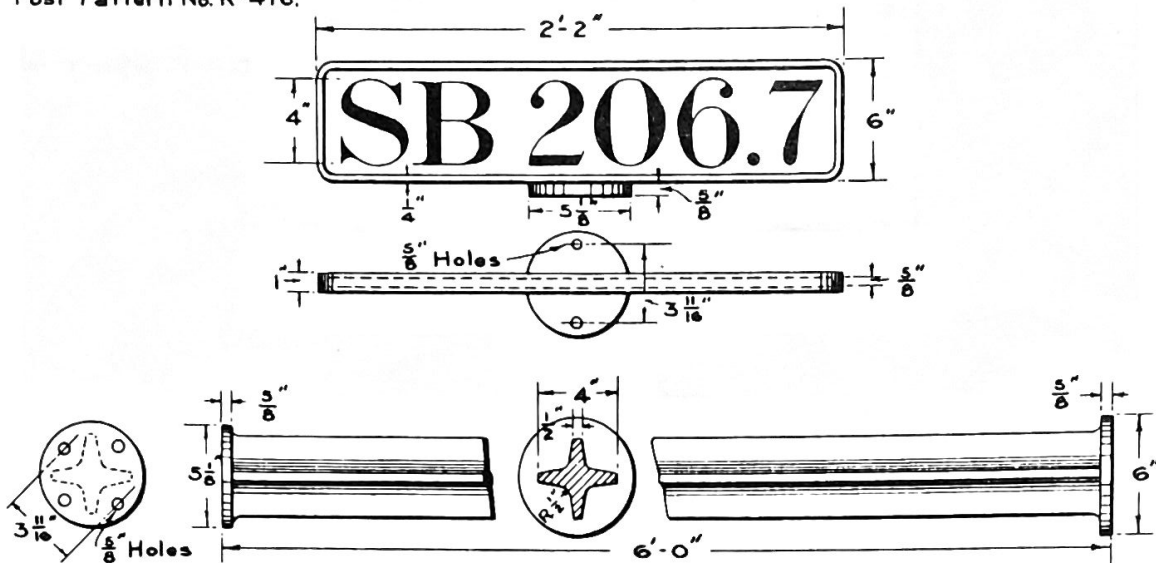
CHIEF ENGINEER M. W. & S.

APPROVED:

E. H. ...

VICE PRES. & GENL. MGR.

Numerical target
 Pattern No. R-726.
 Post Pattern No. R-476.



Target and post to be of cast iron painted white.

Beading around target, and base of post for a distance of 12" above summit of ballast mound, to be painted black.

All letters and figures to be stenciled in black on both sides of target; no freehand lettering will be allowed.

Standard ballast mound for cast iron posts to be neatly placed around base and whitewashed.

Supervisors must see that the reference numbers and letters are correct.

Place post a minimum distance of 11ft. from center line of track with face at right angles.

Position of sign on right side of track, not over 10ft. from near end of structure when traveling in direction of increase of mile post numbers.

Top of post to extend 3ft. above surface of ground.

SOUTHERN RAILWAY



TRESTLE SIGN

CORRECT:

J. H. Galtin

ASST. CHIEF ENGR. M. W. & S.

APPROVED:

B. Herman

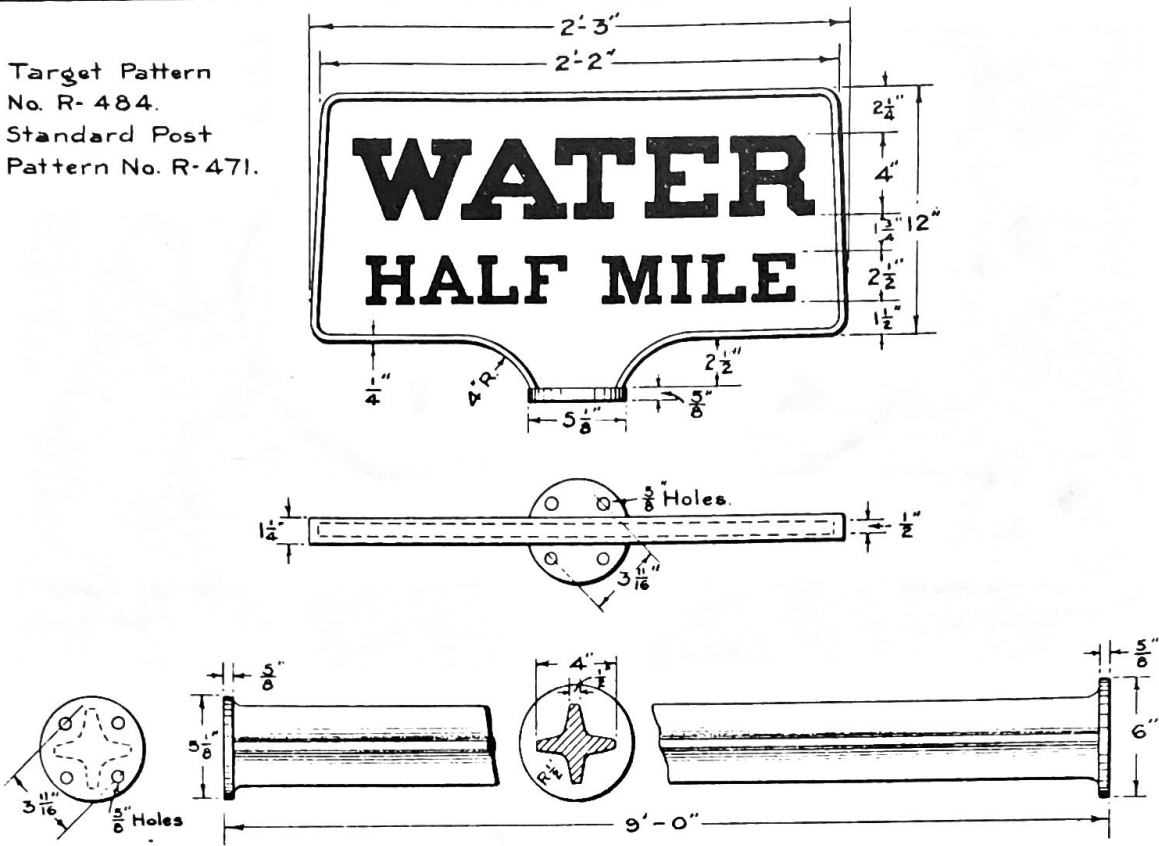
CHIEF ENGINEER M. W. & S.

APPROVED:

E. Woodman

VICE PRES. & GEN'L. MGR.

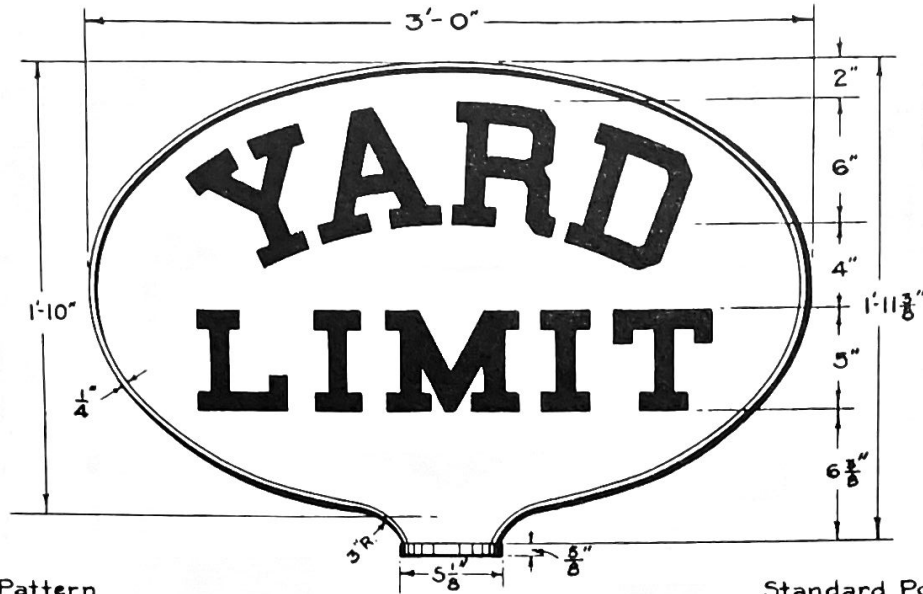
Target Pattern
No. R-484.
Standard Post
Pattern No. R-471.



Cast iron post and target with $\frac{1}{8}$ " relief letters on one face.
 Letters, and beading around target, and base of post 12" above summit of ballast mound, to be painted black.
 Paint sign and post white.
 Standard ballast mound for cast iron posts to be neatly placed around base and whitewashed.
 Place post a minimum distance of 11ft. from center line of track with face at right angles.
 Locate one sign on right side of track approaching tank or stand pipe from each direction.

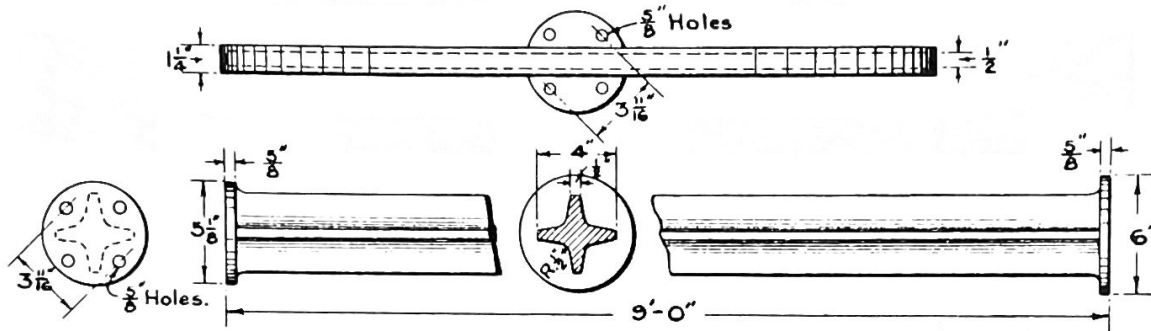
SOUTHERN  RAILWAY
WATER SIGN

CORRECT: *J. H. Galtin*
 APPROVED: *B. Herman*
 APPROVED: *E. Morrison*
 ASST. CHIEF ENGR. M.W. & S. CHIEF ENGINEER M.W. & S. VICE PRES. & GEN'L. MGR.



Target Pattern
No. R-485.

Standard Post
Pattern No. R-471.



Cast iron post and target with $\frac{3}{8}$ " relief letters on both faces.
 Letters, and beading around target, and base of post 12" above summit of ballast mound, to be painted black.
 Paint sign and post white.
 Standard ballast mound for cast iron posts to be neatly placed around base and whitewashed.
 Place post a minimum distance of 11ft. from center line of track with face at right angles; to be located at point to be designated by Superintendent on right side of track approaching yard from each direction.

SOUTHERN RAILWAY



YARD LIMIT SIGN

CORRECT:

J. H. Galtin

ASST. CHIEF ENGR. M. W. & S.

APPROVED:

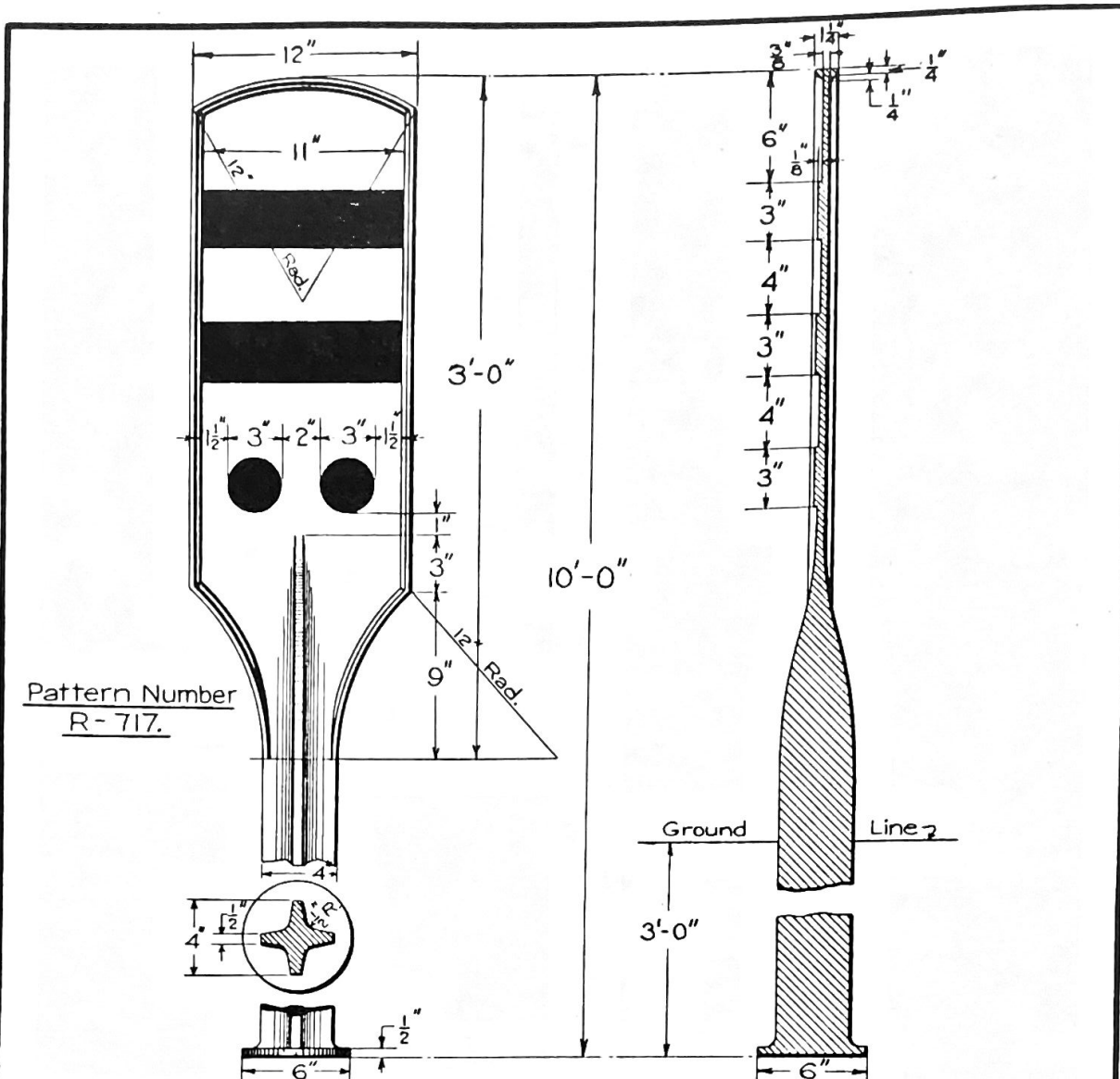
B. Herman

CHIEF ENGINEER M. W. & S.

APPROVED:

E. H. ...

VICE PRES. & GEN'L. MGR.



Pattern Number
R-717.

Cast iron post with $\frac{1}{8}$ " relief bars and dots on one face.
 Bars, dots, beading around target, and post for a height of 12" above the summit of ballast mound, to be painted black. Paint all other portions white.
 Post to be planted 3'-0" in ground.
 Standard ballast mound for cast iron posts to be neatly placed around base.
 Place post a minimum distance of 11 ft. from center line of track, face target at right angles.

SOUTHERN RAILWAY



WHISTLE POST

CORRECT:

F. H. Gattin

ASST. CHIEF ENGR. M. W. & S.

APPROVED:

B. Herman

CHIEF ENGINEER M. W. & S.

APPROVED:

E. Chapman

VICE PRES. & GEN'L. MGR.